

**KA175 Series, Rated up to 175 Amps, 115 or 230 VAC, 400-800 Hz**

**Lightweight, High Performance**

**Product Facts**

- 3PST NO, Side stable
- Gasket sealed
- Buss bar mount



**Performance Data**

**Electrical Characteristics**

**Contact Arrangement** — 3PST NO, Side Stable  
**Rated Operating Voltage** — 115/230 VAC, 230/460 VAC  
 400-800 Hz  
**Resistive Rating** — 175 Amps

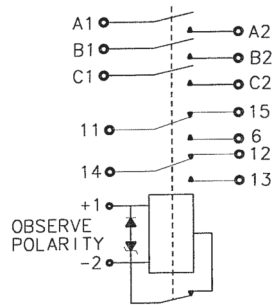
**General Characteristics**

**Temperature Range** — -55°C to +85°C  
**Operating Cycles (Life) at Rated Resistive Load, Min.** — 50,000 cycles  
**Operating Cycles (Life) Mechanical, Min.** — 100,000 cycles  
**Weight, Max.** — 1.25 lbs

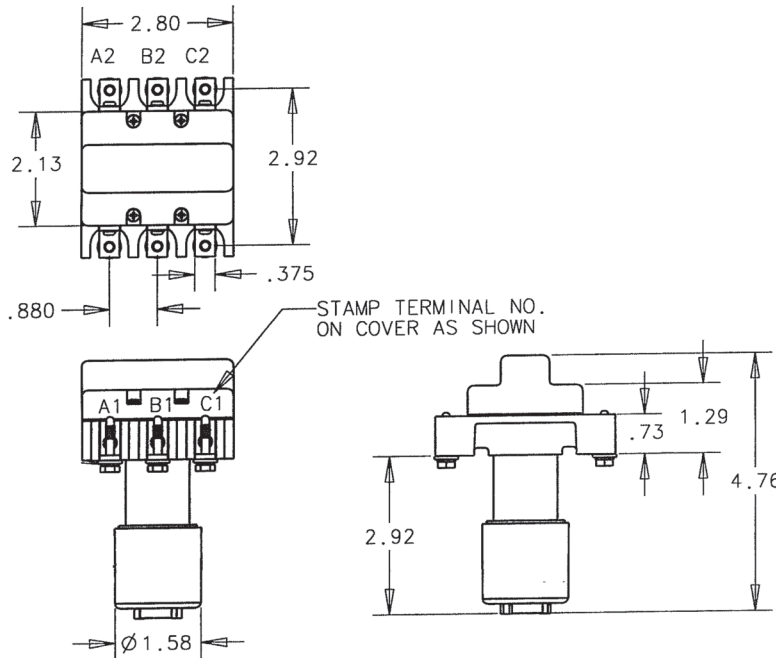
**Coil Characteristics**

**Duty Cycle** — Continuous, economizing  
**Operating Voltage, Nom.** — 28 Vdc  
**Pickup Voltage** — 18 Vdc  
**Dropout Voltage** — 1.0 to 7 Vdc

**Circuit Configurations**  
 (Consult factory for other available circuit configurations)



**Circuit Configuration 1**



**Mounting Style A**

For factory-direct application assistance, phone 419-521-9500 or fax 419-526-2749.

| HARTMAN Part Number | Construction Type | Mounting Style | Coil Type               | Circuit Config. | TE Part Number |
|---------------------|-------------------|----------------|-------------------------|-----------------|----------------|
| KA175B3C            | Gasket/Vented     | A              | Continuous, Economizing | 1               | 2-1616960-7    |